

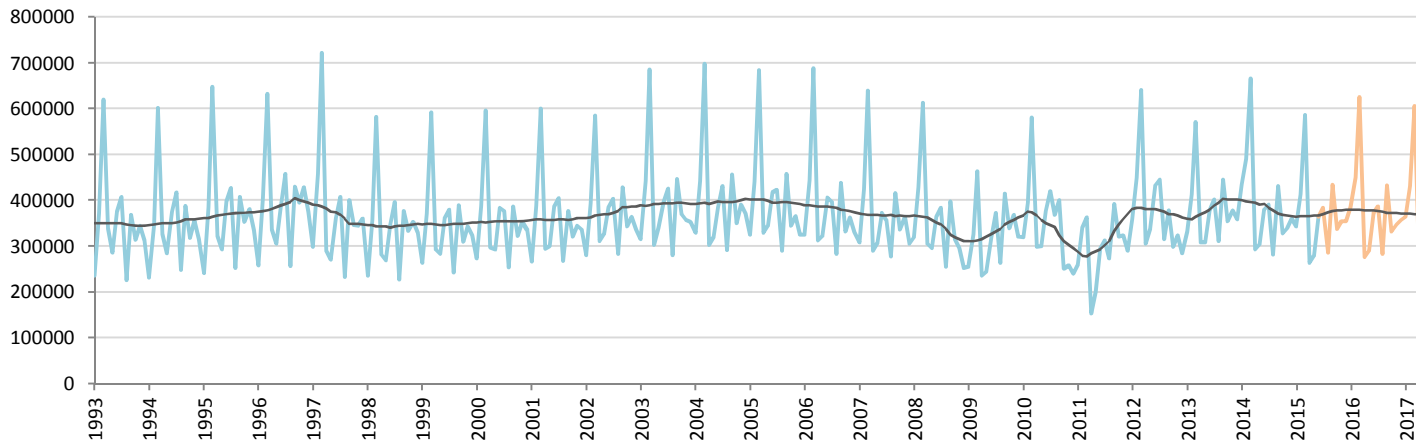
Car Sales Forecast : JAPAN June 2015

Total	Jan.	Feb.	March	April	May	June	July	Aug.	Sept.	Oct.	Nov.	Dec.	YTD	FY
2015	388,780	465,337	667,749	308,823	324,684	426,464	440,009	328,708	497,462	394,011	416,810	409,736	2,581,837	5,068,574
YTY (%)	-20.0	-15.5	-11.5	-8.6	-8.1	-2.7	-1.6	2.4	0.0	2.7	3.8	-1.4	-11.6	-5.9

Comment: In June the car sales decrease by 2,7%. 2015 forecast is a decrease of 5,9%.

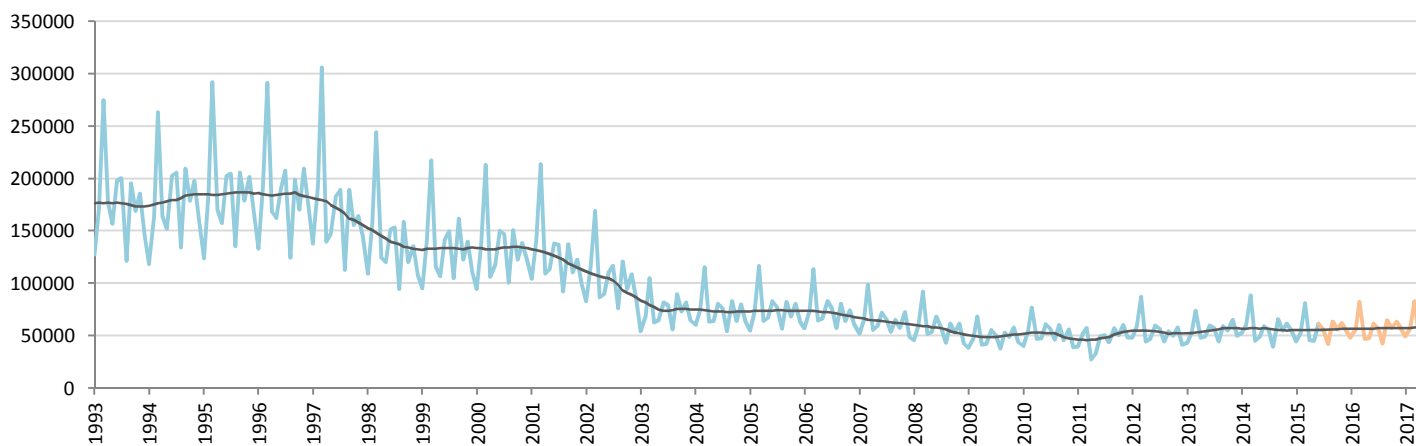
Forecast FY 2016 :	5,220,000	3.0%
--------------------	-----------	------

Passenger Car



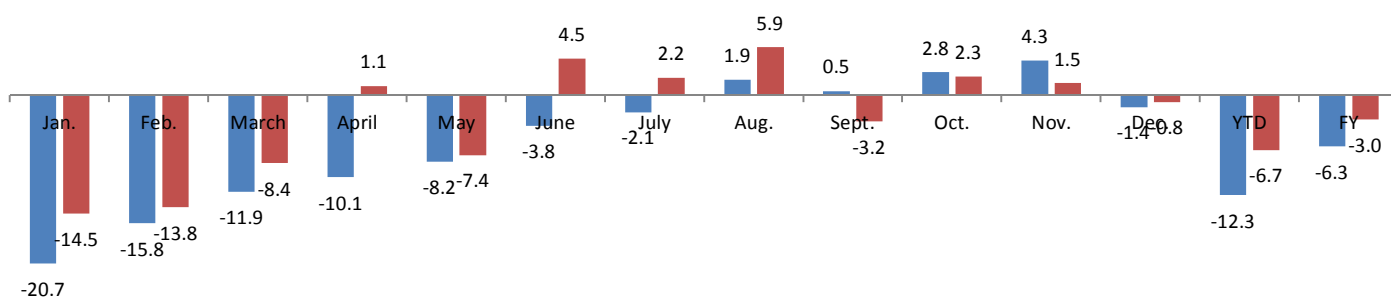
	Jan.	Feb.	March	April	May	June	July	Aug.	Sept.	Oct.	Nov.	Dec.	YTD	FY
2014	433,616	490,509	665,985	292,825	304,370	379,242	391,376	281,325	431,823	328,331	339,831	360,346	2,566,547	4,699,579
2015	344,040	413,192	586,796	263,376	279,419	364,931	383,227	286,632	433,993	337,610	354,350	355,141	2,251,754	4,402,707
YTY (%)	-20.7	-15.8	-11.9	-10.1	-8.2	-3.8	-2.1	1.9	0.5	2.8	4.3	-1.4	-12.3	-6.3

Light Commercial Vehicles



	Jan.	Feb.	March	April	May	June	July	Aug.	Sept.	Oct.	Nov.	Dec.	YTD	FY
2014	52,354	60,491	88,334	44,940	48,862	58,872	55,587	39,728	65,590	55,143	61,551	55,049	353,853	686,501
2015	44,740	52,145	80,953	45,447	45,265	61,533	56,782	42,076	63,470	56,401	62,460	54,595	330,083	665,867
YTY (%)	-14.5	-13.8	-8.4	1.1	-7.4	4.5	2.2	5.9	-3.2	2.3	1.5	-0.8	-6.7	-3.0

YTY variations



Data source: JAMA