

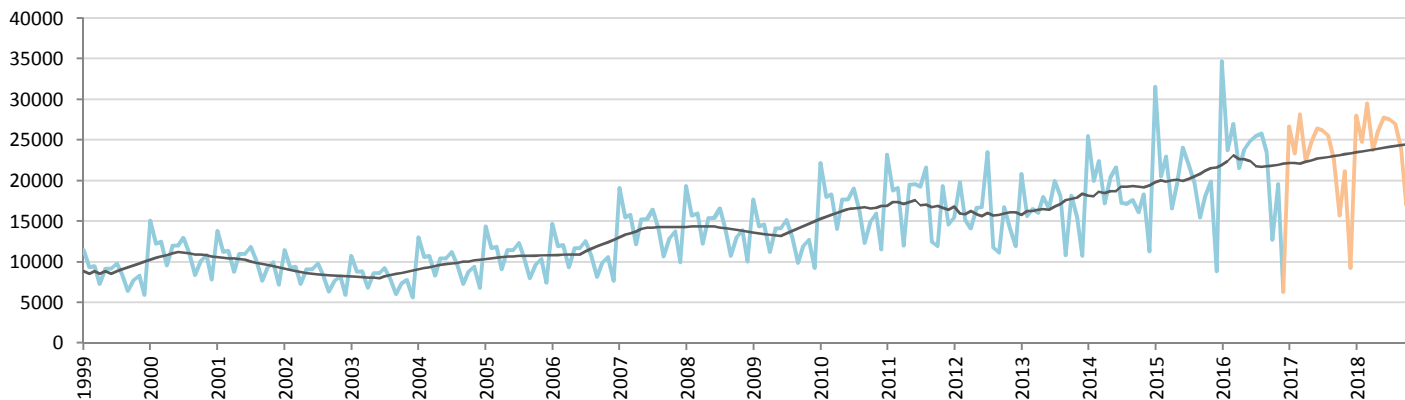
Car Sales Forecast : ISRAEL December 2016

Total	Jan.	Feb.	March	April	May	June	July	Aug.	Sept.	Oct.	Nov.	Dec.	YTD	FY
2015	33,262	21,705	24,367	17,674	20,763	25,470	23,486	21,240	17,735	20,390	21,005	9,793	256,890	256,890
2016	36,281	25,789	28,537	22,927	25,527	26,400	27,303	27,489	24,878	13,612	20,955	7,030	286,728	286,728
YTY (%)	9.1	18.8	17.1	29.7	22.9	3.7	16.3	29.4	40.3	-33.2	-0.2	-28.2	11.6	11.6

Comment: In December the car sales decrease by 28,2%. In 2016 car sales increased by 11,6%.

Trend FY 2017 : 287,000 0.1

Car Sales Forecast : ISRAEL December 2016 - Car

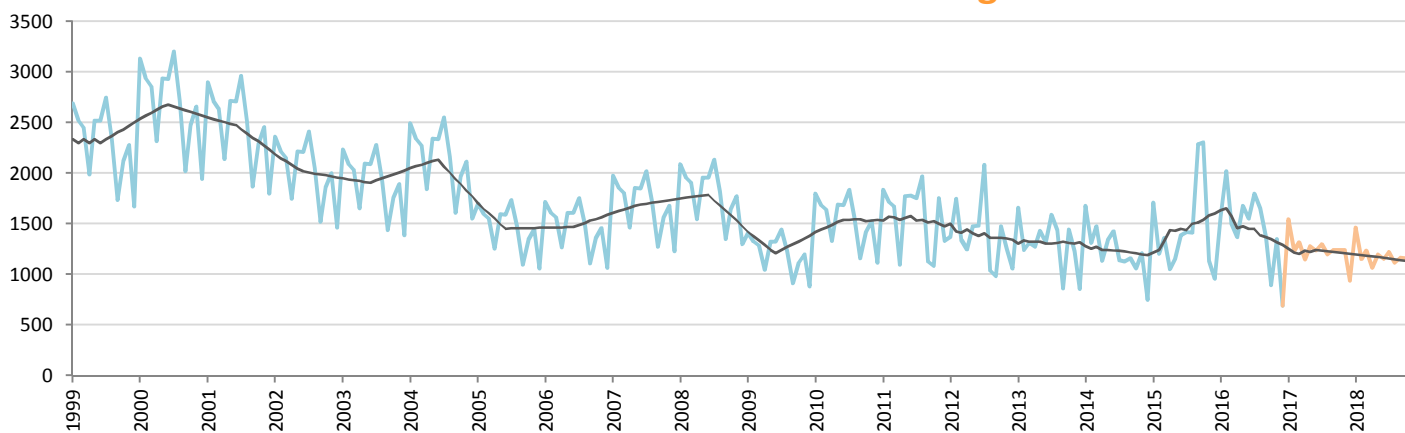


Data processing and forecast by CORAM

CORAM

	Jan.	Feb.	March	April	May	June	July	Aug.	Sept.	Oct.	Nov.	Dec.	YTD	FY
2015	31,553	20,501	23,006	16,621	19,611	24,083	22,066	19,826	15,449	18,088	19,868	8,835	239,507	239,507
2016	34,713	23,770	27,037	21,561	23,847	24,850	25,504	25,835	23,512	12,718	19,606	6,338	269,291	269,291
YTY (%)	10.0	15.9	17.5	29.7	21.6	3.2	15.6	30.3	52.2	-29.7	-1.3	-28.3	12.4	12.4

Car Sales Forecast : ISRAEL December 2016 - Light Com. Veh.

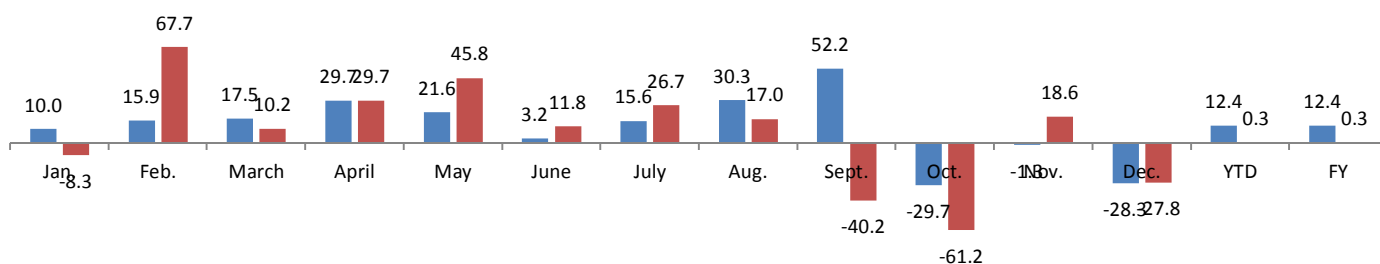


Data processing and forecast by CORAM

CORAM

	Jan.	Feb.	March	April	May	June	July	Aug.	Sept.	Oct.	Nov.	Dec.	YTD	FY
2015	1,709	1,204	1,361	1,053	1,152	1,387	1,420	1,414	2,286	2,302	1,137	958	17,383	17,383
2016	1,568	2,019	1,500	1,366	1,680	1,550	1,799	1,654	1,366	894	1,349	692	17,437	17,437
YTY (%)	-8.3	67.7	10.2	29.7	45.8	11.8	26.7	17.0	-40.2	-61.2	18.6	-27.8	0.3	0.3

YTY variations



Data source: IVIA. Data processing and forecast by CORAM.